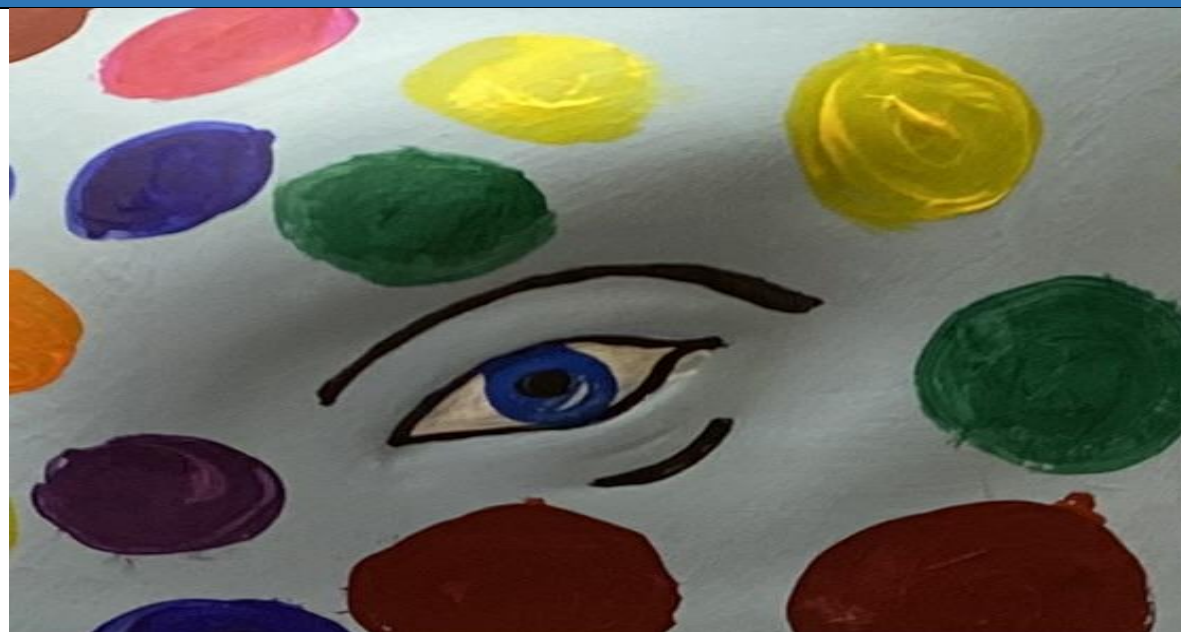


PUDDLETOWN VC CE FIRST SCHOOL NEWSLETTER



January 2025

January 2025

REMINDERS

The Children have returned and dived straight into their learning. It is always wonderful to see the progress the children are making across the school and how proud they are of their learning. Children that previously were reluctant to write, now enthusiastically getting on with it, excited to share their stories and thoughts with others. The school has been working hard on our writing and have introduced 'literacy tree' as our scheme to support us. It ensures progression and coherence throughout the school through high quality real books that are varied and really engaging for the staff and children alike. We think you will really notice a difference in your child's work when you see their books. We also engage in collaborative writing events with other schools in Wessex mat so children can work with a range of real authors and other pupils to promote a love of writing.

Our Weldmar elephant has now been painted and named. Thankyou to all the children who sent their designs in for our school council to choose from. They were all so good that they decided to combine elements from several designs to put in the finished one. Mrs McCathy and Mrs Newton worked tirelessly with the children to paint our elephant and she looks absolutely stunning. We are not allowed to reveal her full beauty yet as Weldmar would like to entice you to follow the Elephant trail in their 'stampede to the sea' to discover our Puddletown elephant somewhere on the trail. However there is a sneak preview above. It is a really big commitment for the school to raise the £900 they are suggesting and there will be fundraising activities coming up to work towards that. We have already set up a just giving page https://www.justgiving.com/page/puddletown-first-school-1736089717541?utm_campaign=lc_frp_share_transaction_fundraiser_page_launched&utm_content=815d505e-027f-49d1-a37b-fdb8f8904802&utm_medium=email&utm_source=postoffice&utm_term=1736090123986

and raised over £100 already so thank you for your continued support. Weldmar trust supports so many of our families in this area and so it is the charity we have chosen to support this year. It is also a charity that was dear to Mrs Roff's heart and because our elephant is to provide comfort and support for our pupils it seemed only fitting that we should name our elephant Ally.

We are always keen to involve you in your child's learning as much as possible and while we enjoyed our parent and child class drop in craft afternoons, we thought it may be more interesting for you to see what everyday learning looks like for your child. We will soon be arranging Maths and phonics/English drop in mornings so that you can experience what a typical

End of day change
To ease the busyness and potential for mishaps at the end of the day, School **gates will be opened at 3.15pm** after half term. This enables staff to get children ready for you and the bus children to have left.



year 3 art work.
printing and clay work
on their fossil theme.

lesson might look like for your child and how the learning is organised. More information to follow. Parent consultations will be taking place the week beginning 31st March when you will also receive your child's report.

Attendance is a key area that the DFE focus on in schools, as attending school regularly is so vital to the progress your child makes in their learning. Generally at Puddletown our attendance is above the national average. However, it only takes a few bugs to go round, an increase in requests for term time holidays and late arrivals and our percentage begins to slip. Please support your child and the school by endeavouring to attend on time and not requesting term time holidays. Thank you for your continued support with this.

We are hopeful that Spring will be in the air when we return after the half term break and we look forward to some more sunshine and daylight hours.

Mrs Anna Seal

Head of school